

T027 // Translator Tool for CompactConnect

With the translator tool for the CompactConnect software it is possible to translate all program messages and menus to a desired local language. Finally, with this tool a local language version can be launched and this language version can be loaded permanently or on request by the user.

The CompactConnect software can be found on the CD delivered together with the sensor or is available for download from the Micro-Epsilon Website.

After installing the CompactConnect software, the tool can be found in the folder:

C:\Program Files\CompactConnect  **Translator-Tool**

Procedure

1. Start the program by double click. The following window will open:

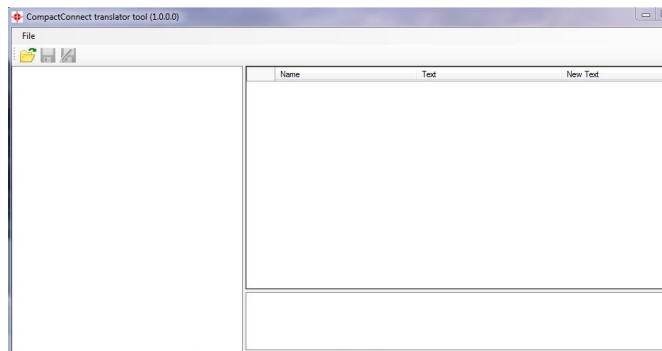



Figure 1: Starting the translator tool

2. Now click on **File** and **Open** or on the icon . Select a language you want to edit:

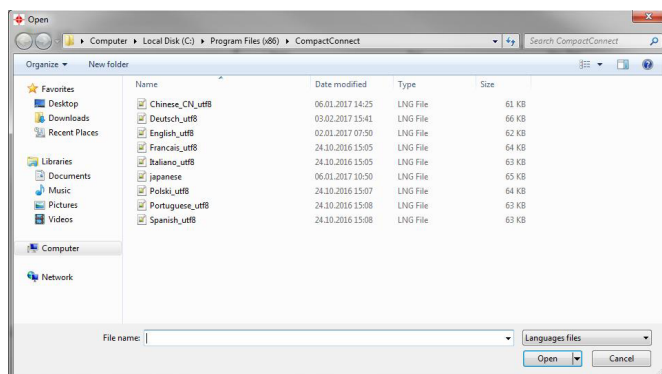


Figure 2: Open a language file

3. After selecting a language you will get to the next window:

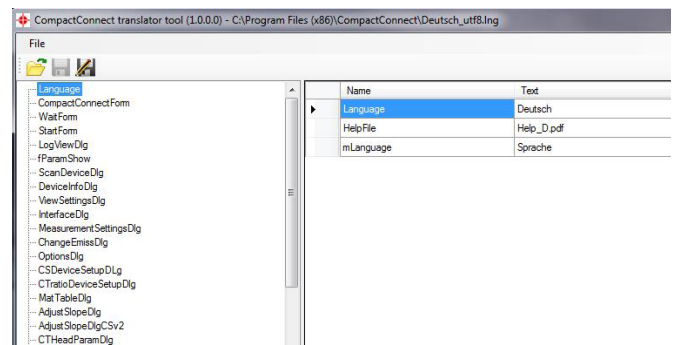



Figure 3: Main window of translator tool

4. On the left side of the window different categories can be selected. On the right side a table with all items of each category is shown. The table contains the columns **Name**, **Text** and **New Text**. Type in the new translation name in the column **New Text** and press Enter. To save the changes, go to **File** and **Save** or click on the icon .

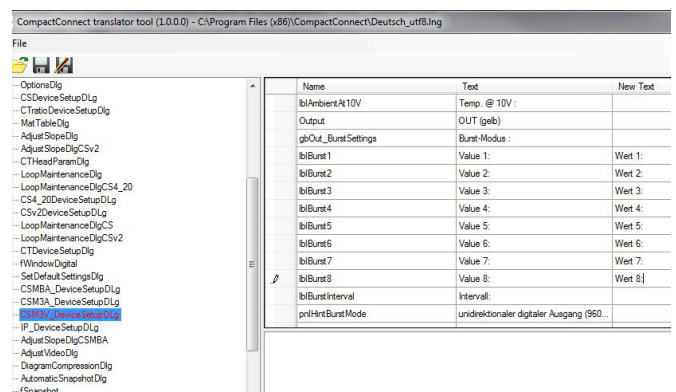


Figure 4: Translate and save

The changed items can now be seen in the column **Text**.

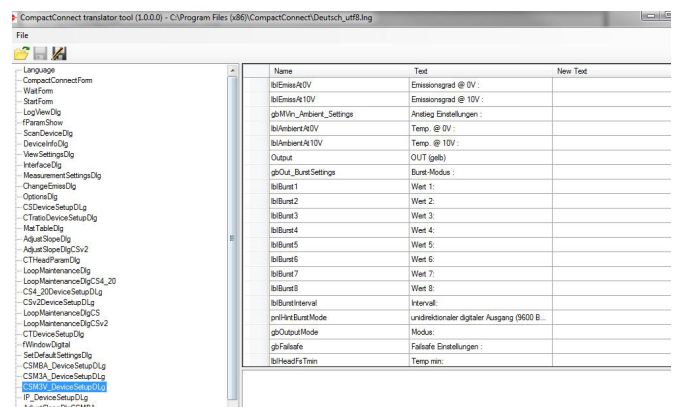



Figure 5: Translation is saved in the Text column

5. To create the new language file, go to **File** and **Save as** or click on the icon , enter the new language file name and press **Save**.

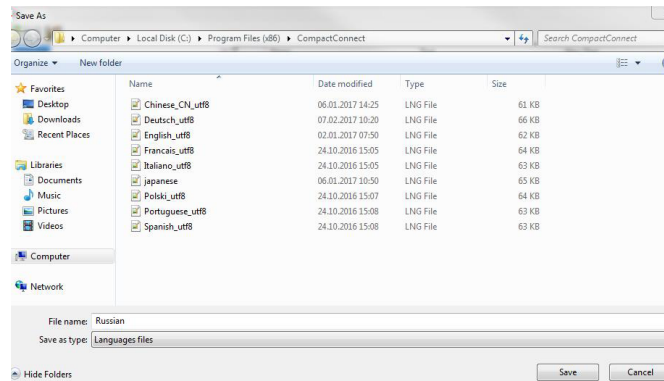


Figure 6: Save As and type in the new file name

As an alternative, a new language file can be created from the CompactConnect software. This way is recommended to ensure that the latest CompactConnect software features are included.

Select **Preferences** and **Save language file**. The current selected language will be saved as a temp file.

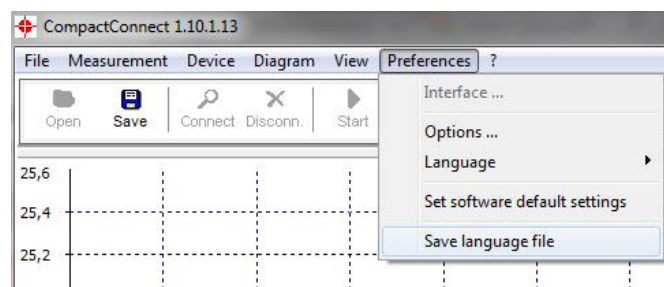


Figure 7: Save language file under CompactConnect

The new language file called **Temp.lng** is created in the folder

C:\Program Files\CompactConnect

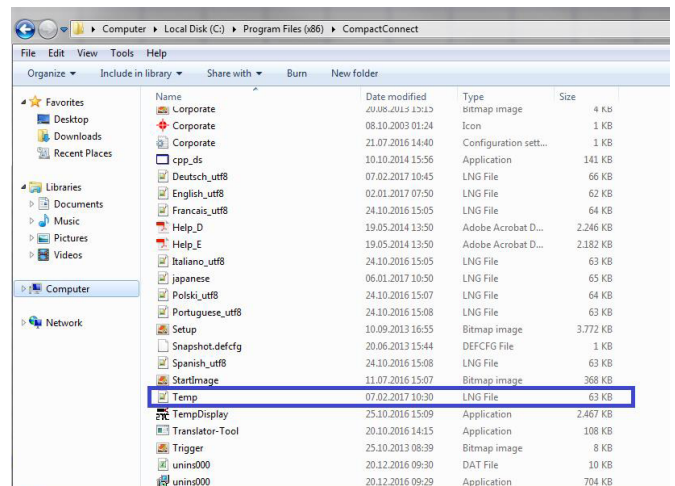


Figure 8: Temp language file

Rename the **Temp.lng** - file with the desired language. The new file can be edited with the Translator-Tool as described before.

If a new CompactConnect version with e.g. new features becomes available, existing language files can be updated as well.

Select the language under menu **Preferences** and **Language**. Afterwards **save the language file** as a temp file, rename it again and translate the new features.